

□ AISI 316L PFA LINED E TYPE - EN 14420-7:2004 CAM & GROOVE WITH PROTECTIVE GUARD DIFLON F23

The fast retainer is used in chemical, pharmaceutical and food industries.

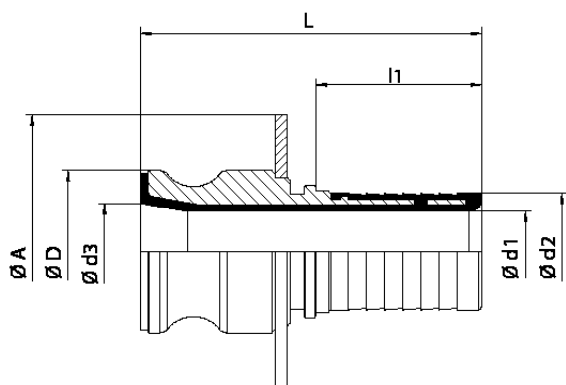
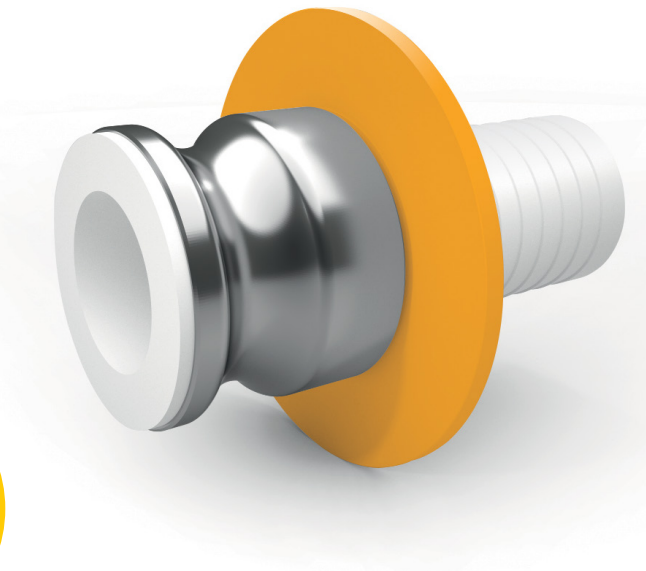
The CELERITY in connecting hoses, to equipments and plants is what distinguishes this type of retainer from the other ones.

The standard construction material is AISI 316L/PFA.

The inner lining ensures resistance against nearly all chemicals, pH 0÷14, design temperature -40 °C ÷ 200 °C.

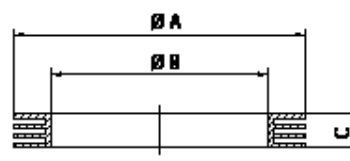


Antistatic version



RECOMMENDED GASKET

DIFLEX CAM & GROOVE gasket, resistant to all acids and chemicals, pharmaceuticals and food products with temperatures from -170 °C to +270 °C and pressures up to 50 bar.



GASKET CAM & GROOVE

DN	L	l1	Ø D	Ø d1	Ø d2	Ø d3	Ø A
15 - 1/2"	66	30	24,5	9	13	12	70
20 - 3/4"	86	31	29	12	19,2	15	70
25 - 1"	92	34	36,5	16	25,7	20	80
32 - 1 1/4"	99	40	44,5	22	32,4	28	90
40 - 1 1/2"	101	51	53	27	38,5	37	100
50 - 2"	120	62	63	39	51	45	110
65 - 2 1/2"	132	68	75,5	51	64	57	130
80 - 3"	155	81	91	60	75	66	150
100 - 4"	158	92	120	87	101	96	170

DN	Ø A	Ø B	C
15 - 1/2"	26	17	3,96
20 - 3/4"	35	22	5,53
25 - 1"	40	27	6,35
32 - 1 1/4"	49	34	6,35
40 - 1 1/2"	55	41	6,35
50 - 2"	66	51	6,35
65 - 2 1/2"	79	60	6,35
80 - 3"	94	76	6,35
100 - 4"	123	102	6,35