



## ENCAPSULATE GASKETS FOR CAM & GROOVE FITTINGS: FEP SILICON / VITON® - PFA SILICON / VITON®

In the specific form the encapsulated gaskets consist of a core of elastomeric perfectly coated fluoropolymer FEP or PFA. Basically the two types of products differ for a different resistance to temperature and abrasion. The inner core is Viton® or Silicone. They are used which require a high chemical resistance and product purity.

Used in industries:

- Chemical.
- Petrochemical.
- Food.
- Pharmaceutical.

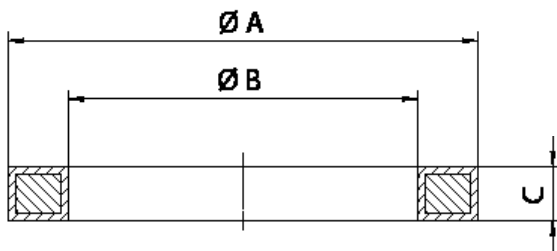
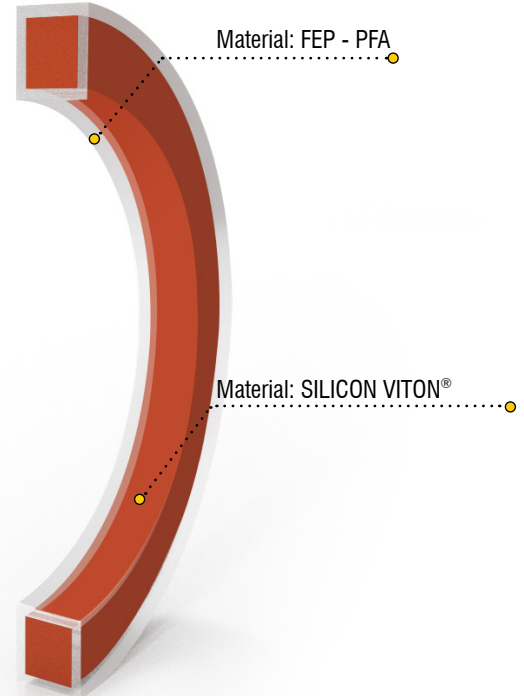
Operating temperature FEP lining:

- FEP / Silicon: -60 ° C to + 200 ° C
- FEP / Viton®: -20 ° C to + 200 ° C

Operating temperature PFA lining:

- PFA / Silicon: -60 ° C to + 260 ° C
- PFA / Viton®: -20 ° C to + 200 ° C

This type of gasket offers greater resistance to abrasion.



### Gaskets dimensions

DN	Ø A	Ø B	C
15 - 1/2"	26	17	3,96
20 - 3/4"	35	22	5,53
25 - 1"	40	27	6,35
32 - 1 1/4"	49	34	6,35
40 - 1 1/2"	55	41	6,35
50 - 2"	66	51	6,35
65 - 2 1/2"	79	60	6,35
80 - 3"	94	76	6,35
100 - 4"	123	102	6,35

### Service gaskets for fittings type:

