

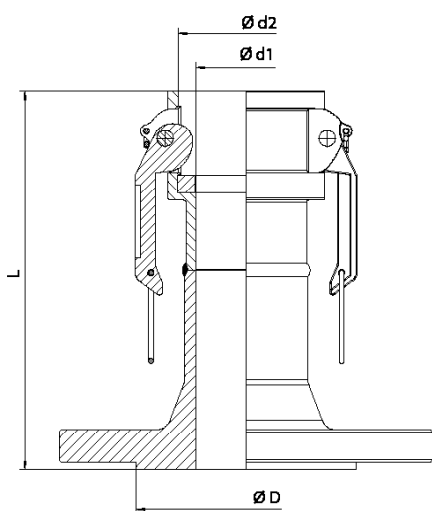
□ AISI 316L LBS FF EN 14420-7:2004 CAM & GROOVE DIFLON F9

The fast fitting is used in chemical, pharmaceutical and food industries.

The CELERITY in connecting hoses, to equipments and plants is what distinguishes this type of retainer from the other ones.

The standard construction material is AISI 316L.

The fitting flange is made according to the Standard Specification required by the customer.



RECOMMENDED GASKET

DIFLEX CAM & GROOVE gask resistant to all acids and chemica pharmaceuticals and food products w temperatures from -170 °C to +270 and pressures up to 50 bar.



GASKET CAM & GROOVE

DN	L	Ø D DIN	Ø D ANSI	Ø d1	Ø d2
15 - 1/2"	90	45	35	13	25,5
20 - 3/4"	90	58	43	20	30
25 - 1"	100	68	51	24	37,5
32 - 1 1/4"	110	78	64	32	45,5
40 - 1 1/2"	120	88	73	38	54
50 - 2"	125	102	92	48	64
65 - 2 1/2"	130	122	105	60	76,5
80 - 3"	145	138	127	74	92
100 - 4"	150	158	158	102	121

DN	Ø A	Ø B	C
15 - 1/2"	26	17	3,96
20 - 3/4"	35	22	5,53
25 - 1"	40	27	6,35
32 - 1 1/4"	49	34	6,35
40 - 1 1/2"	55	41	6,35
50 - 2"	66	51	6,35
65 - 2 1/2"	79	60	6,35
80 - 3"	94	76	6,35
100 - 4"	123	102	6,35