



□ AISI 316L PFA LINED LAS FF EN 14420-7:2004 CAM & GROOVE RETAINER DIFLON F6

The fast fitting is used in chemical, pharmaceutical and food industries.

The CELERITY in connecting hoses, to equipments and plants is what distinguishes this type of fitting from the other ones.

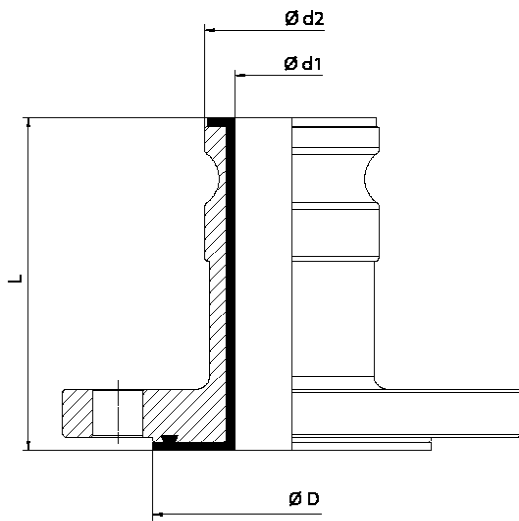
The standard construction material is AISI 316L/PFA.

The inner lining ensures resistance against nearly all chemicals, pH 0÷14, design temperature -40 °C ÷ 200 °C.

The fitting flange is made according to the Standard Specification required by the customer.

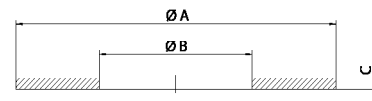


Antistatic version



RECOMMENDED GASKET

DIFLEX flat gasket, resistant to all acids and chemicals, pharmaceuticals and food products with temperatures from -170 °C to +270 °C and pressures up to 50 bar.



FLAT GASKET

DN	L	Ø D DIN	Ø D ANSI	Ø d1	Ø d2
20 - ¾"	80	58	43	15	29
25 - 1"	85	68	51	19	36,5
32 - 1 ¼"	95	78	64	27	44,5
40 - 1 ½"	95	88	73	33	53
50 - 2"	105	102	92	43	63
65 - 2 ½"	110	122	105	55	75,5
80 - 3"	120	138	127	69	91
100 - 4"	130	158	158	97	120

DN	Ø A DIN	Ø A ANSI	Ø B	C
20 - ¾"	58	43	20	5,53
25 - 1"	68	51	25	6,35
32 - 1 ¼"	78	64	32	6,35
40 - 1 ½"	88	73	40	6,35
50 - 2"	102	92	50	6,35
65 - 2 ½"	122	105	65	6,35
80 - 3"	138	127	80	6,35
100 - 4"	158	158	100	6,35