



□ AISI 316L BS 4825 SANITARY CLAMP RETAINER DIFLON E1

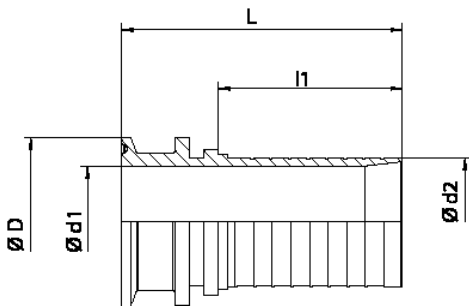
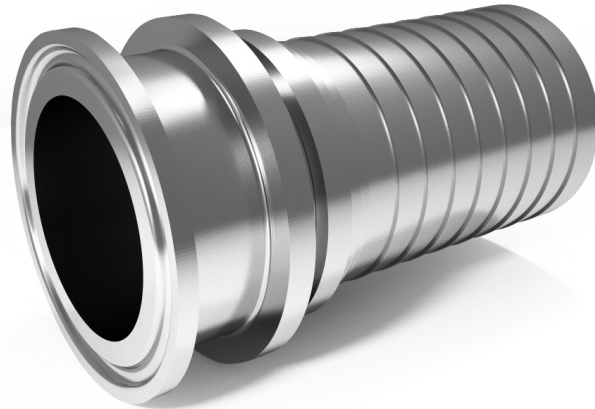
The fitting is used in pharmaceutical and food industries to connect hoses quickly to equipments and plants.

Standard construction material is AISI 316L.

The fitting is laser marked with material, lot/casting, DN and brand.

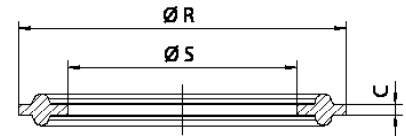
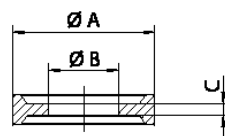
Mechanical mirror polishing with standard surface finish Ra 0,6.

Other finishes are available on request.



RECOMMENDED GASKET

DIFLEX BS 4825 clamp gasket, resistant to all acids and chemicals, pharmaceuticals and food products with temperatures from -170 °C to +270 °C and pressures up to 50 bar.



GASKET CLAMP BS 4825

DN	L	l1	Ø D	Ø d1	Ø d2
15 - 1/2"	58	30	25,4	9	13
20 - 3/4"	64	31	25,4	15	19,2
25 - 1"	69	34	50,4	20	25,7
32 - 1 1/4"	80	40	50,4	28	32,4
40 - 1 1/2"	94	51	50,4	33	38,5
50 - 2"	109	62	63,9	46	51
65 - 2 1/2"	115	68	77,4	59	64
80 - 3"	134	81	90,9	71	75
100 - 4"	150	92	118,9	96	101

DN	Ø A	Ø B	C	Ø R	Ø S
15 - 1/2"	22	9,6	1,7	-	-
20 - 3/4"	22	16	1,7	-	-
25 - 1"	-	-	1,7	50,5	22,1
32 - 1 1/4"	-	-	1,7	50,5	35,1
40 - 1 1/2"	-	-	1,7	64	47,4
50 - 2"	-	-	1,7	77,5	60,5
65 - 2 1/2"	-	-	1,7	91	73,2
80 - 3"	-	-	1,7	119	97,5
100 - 4"	-	-	1,7	167	146,9