

**PTFE LINED SPACERS TYPE G
DESIGN DIN 2448/2874 - CERTIFIED - 2014/68/EU (PED)**

Standard Supply

Design:

DIN 2848/2874

Range:

DN 15 - DN 600, PN 10

Metallic part:

body: P265GH

Interior lining:

↶ PTFE

Variants

Metallic parts:

Stainless Steel 304L/316L

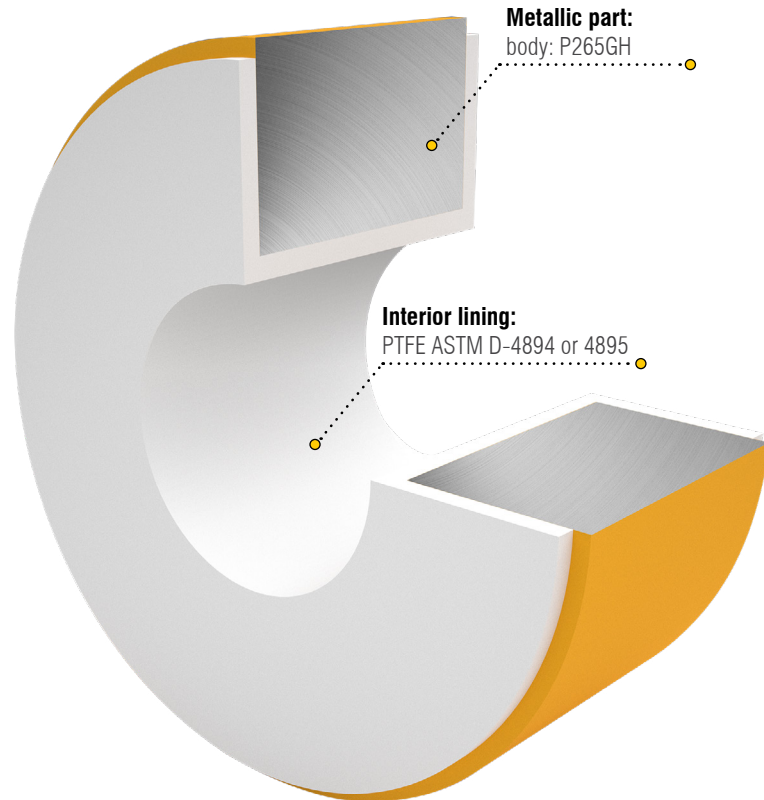
Low temp. steel P275NL

Interior lining:

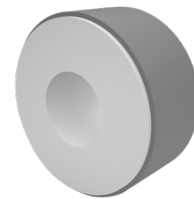
↶ Antistatic PTFE

↶ PFA

↶ Antistatic PFA



Spacer Type G in Antistatic version



Standard finishing:
gray epoxy-vinyl
zinc paint

Available on request



Approvals and Certifications



Quality and Special tests



Engineering Services



Special Supply



Stainless steel 304L/316L components



External Finiture



DIN

index

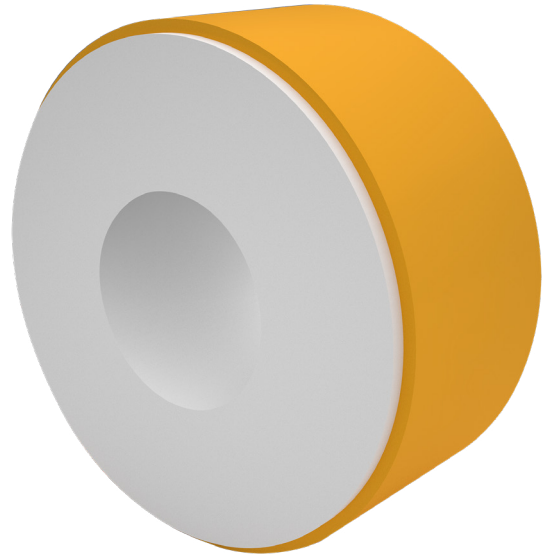
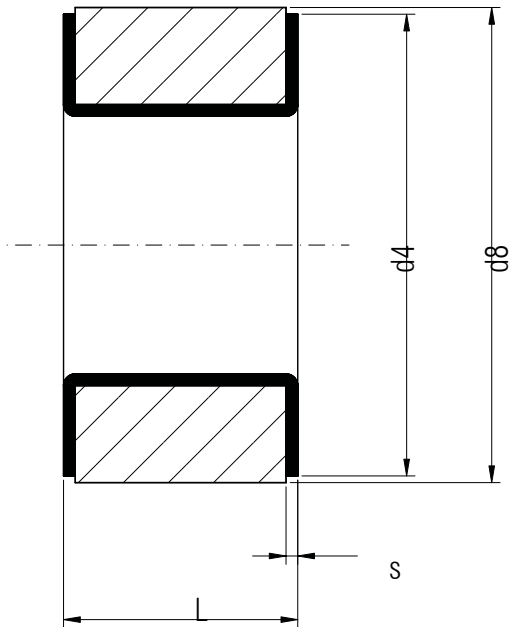
previous view

D2-58
data sheet

DIFLINE

D2

PTFE LINED SPACERS TYPE G DESIGN DIN 2448/2874 - CERTIFIED - 2014/68/EU (PED)



Dimension table

DN	L min. mm	L max. mm	s ± 10% mm	d4 mm	d8 mm	Weight kg
15	30	60	3	45	50	0,9
20	30	60	3	58	60	1,2
25	30	60	3	68	70	1,8
32	30	60	3,5	78	82	2,1
40	30	60	3,5	88	92	2,6
50	30	60	4	102	107	3,7
65	30	70	4,5	122	127	4,7
80	30	70	5	138	142	5,3
100	30	80	5,5	158	162	9,5
125	30	80	5,5	188	192	11
150	30	80	6	212	218	14
200	30	80	6,5	268	273	18
250	30	80	7	320	328	29
300	30	90	7	370	378	30
350	30	90	7	430	438	50
400	30	90	7	482	488	60
450	30	100	7	532	540	71
500	30	100	7	585	594	75

Technical specifications of Difline products



Pipes and Flanges dimensions according to DIN



Fittings dimensions according to DIN 2848



Operative Conditions



Bolt Torque



Finiture, Marking, Packing



Table of Chemical Resistance of Materials*