



DIN

index

previous view

D2-31

data sheet

DIFLINE

D2

PTFE LINED ELBOWS 90° DESIGN DIN 2448/2874 - CERTIFIED - 2014/68/EU (PED)

Standard Supply

Design:

DIN 2848/2874

Flange: 1 fixed + 1 free

Range:

DN 15 - DN 500, PN 10

Version A:

With welded components

body: P245GH EN 10216-217

flange: P245GH EN 1092-1

stub-end: P235GH EN 10273

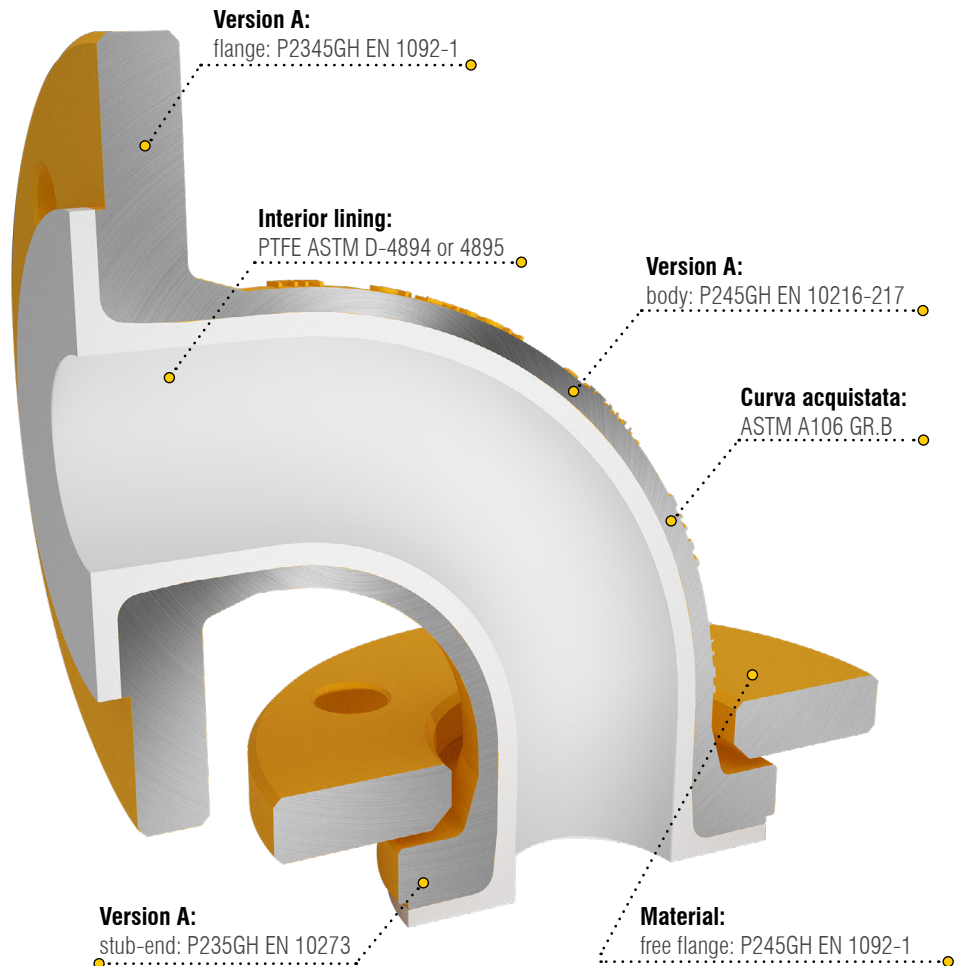
Version F:

fusion: GP240GH

Interior lining:

← PTFE

← PFA



Variants

Design:

for big diameters more than one piece will be provided

Flange: 1 fixed + 1 fixed

Metallic parts:

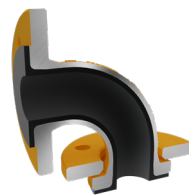
Stainless Steel 304L/316L

Low temp. steel P275NL

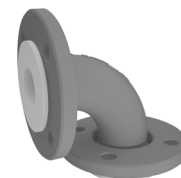
Interior lining:

← Antistatic PTFE

← Antistatic PFA



Elbow 90° in Antistatic version



Standard finishing:
gray epoxy-vinyl zinc paint

Available on request



Approvals and Certifications



Quality and Special tests



Engineering Services



Special Supply

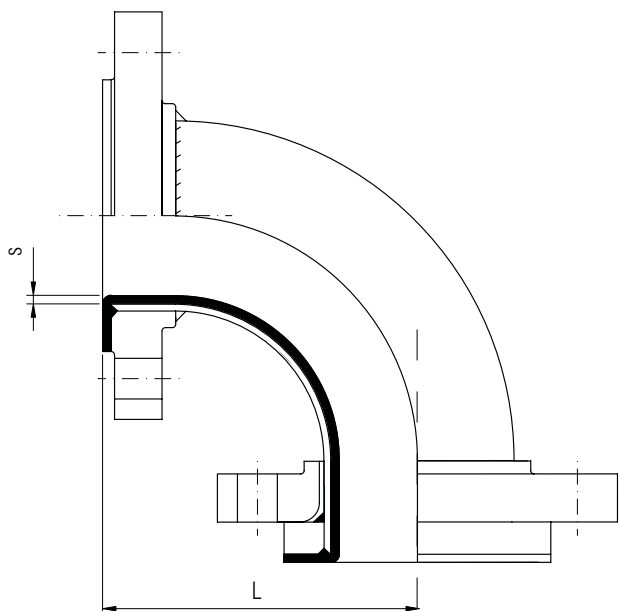


Stainless steel 304L/316L components



External Finiture

**PTFE LINED ELBOWS 90°
DESIGN DIN 2448/2874 - CERTIFIED - 2014/68/EU (PED)**



Dimensional table

DN	L mm	s ± 10% mm	Weight kg
15	80	3,0	1,5
20	95	3,0	2,1
25	110	3,0	2,7
32	130	3,5	4,0
40	150	3,5	4,6
50	120	4,0	5,9
65	140	4,5	7,5
80	165	5	9,6
100	205	5,5	13,1
125	245	5,5	18,1
150	285	6	25,0
200	365	6,5	41,8
250	450	7	88,1
300	525	7	117,4
350	600	7	156,1
400	680	7	175
450	705	7	282
500	830	7	210

Technical specifications of Difline products



Pipes and Flanges dimensions according to DIN



Fittings dimensions according to DIN 2848



Operative Conditions



Bolt Torque



Finiture, Marking, Packing



Table of Chemical Resistance of Materials*