

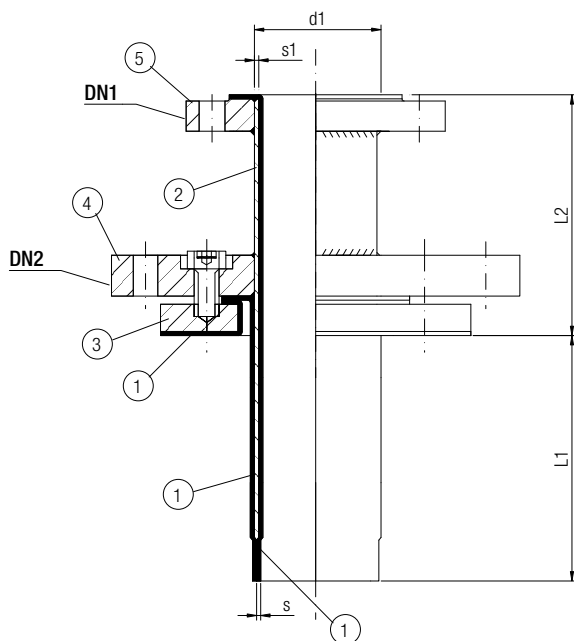


Pescanti rivestiti in PTFE saldato

- ASME/ANSI B16.5 Classe 150
- DN 1/2" - DN 16"
- Versione standard: flange fisse
- Corpo in acciaio al carbonio

PTFE-lined dip pipes

- ASME/ANSI B16.5 Class 150
- DN 1/2" - DN 16"
- Standard version: fixed flanges
- Carbon steel body



Materiali/Materials

- | | |
|---|--------------------------|
| 1 | PTFE ASTM D-4894 or 4895 |
| 2 | St 37.0 - DIN 2448 |
| 3 | St 37.2 - DIN 17100 |
| 4 | ASTM A 105 |
| 5 | ASTM A 105 |

Fornibili a richiesta/Available on request

- Flangia libera DN1/DN1 loose flange
- Flange ANSI B16.5 - Classe 300/ANSI B16.5 - Class 300 flange
- Resistenti al vuoto/Vacuum resistance
- PTFE antistatico/Antistatic PTFE
- Corpo in acc. inox/Stainless steel body
- Diametri superiori a richiesta/Higher diameters on request
- Tubi in lunghezza sino a 5 m/Length up to 5 m

DN1	DN2	L1 max. ± 25 mm	L2 max. ± 5 mm	d1 x s1	s mm	Peso ca. kg/Weight
1/2"		2500	150	26,9 x 2,3	2,5	1,3
3/4"		2500	150	26,9 x 2,3	3,0	1,5
1"		2500	150	33,7 x 2,6	3,0	2,0
1 1/4"		2500	150	42,4 x 2,6	3,0	2,8
1 1/2"		2500	150	48,3 x 3,2	3,0	3,4
2"		2500	150	60,3 x 4,5	3,0	4,8
2 1/2"		2500	150	76,1 x 4,0	3,0	6,4
3"		2500	150	88,9 x 4,5	3,0	8,2
4"		2500	150	114,3 x 5,0	4,5	11,5
5"		2500	150	139,7 x 5,6	4,5	18,0
6"		2500	150	168,3 x 6,3	5,0	28,7
8"		2500	150	219,1 x 6,3	5,0	40,0
10"		2500	150	273 x 10,0	5,2	57,0
12"		2500	200	323,9 x 7,5	6,5	76,0
16"		2500	200	406,4 x 10,0	6,5	120

on request/a richiesta