



GASKET FOR BS 4825 CLAMP FITTINGS

Application examples

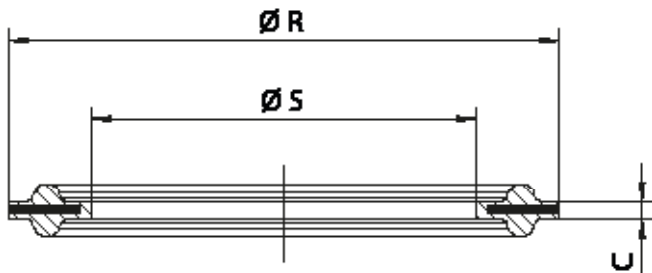
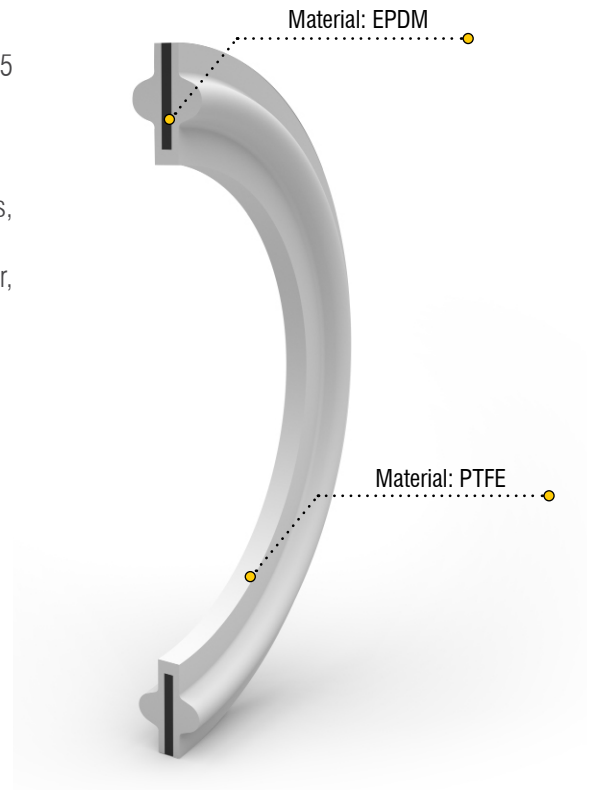
In specific design envelope PTFE gaskets with EPDM insert for BS 4825 fittings

Applications

Acids, Strong alkali, Solvents, Catalyzers, Aromatics, Foods, Pharmaceuticals, Chemicals, Petrochemicals, etc.

The PTFE envelope is a protective barrier to the internal acid resistant rubber, wich for a limited period retains its elasticity.

- Operating temperature: -40° C +120° C
- Operation lifetime: medium



Gaskets dimensions

DN	Ø A	Ø B	C
25 - 1"	50,5	22,1	1,7
32 - 1 ¼"	50,5	35,1	1,7
40 - 1 ½"	64	47,4	1,7
50 - 2"	77,5	60,5	1,7
65 - 2 ½"	91	73,2	1,7
80 - 3"	119	97,5	1,7
100 - 4"	167	146,9	1,7

Service gaskets for fitting type:

