



## PTFE ENVELOPED GASKET WITH FREE ASBESTOS INSERT - TYPE C FOR EN 1092-01 OR ANSI FLANGE

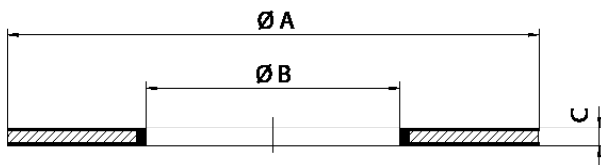
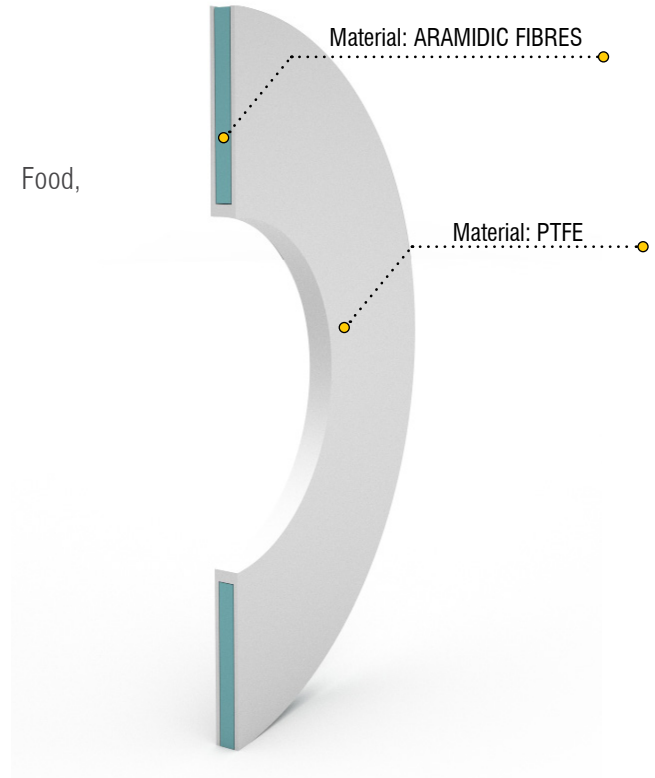
### Application examples

- flat gaskets for flanges
- profiled flat gaskets, for quick assembly etc.

### Applications

Acids, Strong alkali, Solvents, Catalyzers, Aromatics, etc. Food, Pharmaceuticals, Chemicals, Petrochemicals, etc.

- Operating temperature: + 180° C
- Working pressure at room temperature: 16 bar
- Operation lifetime: excellent



### Gaskets dimensions

DN	Ø A DIN	Ø A ANSI	Ø B	C
15 - 1/2"	45	35	15	3
20 - 3/4"	58	43	20	3
25 - 1"	68	51	25	3
32 - 1 1/4"	78	64	32	3
40 - 1 1/2"	88	73	40	3
50 - 2"	102	92	50	3
65 - 2 1/2"	122	105	65	3
80 - 3"	138	127	80	3
100 - 4"	158	158	100	3

### Service gaskets for fitting type:

