

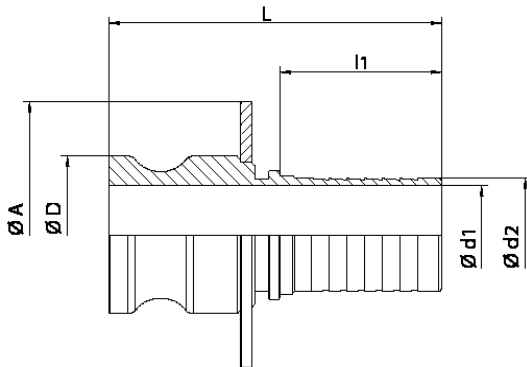
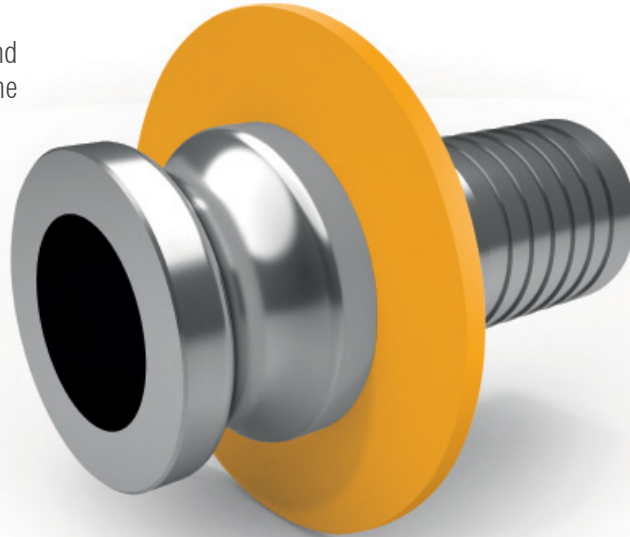


□ AISI 316L E TYPE - EN 14420-7:2004 CAM & GROOVE WITH PROTECTIVE GUARD DIFLON F22

The fast fitting is used in chemical, pharmaceutical and food industries.

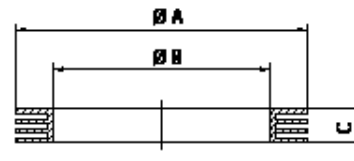
The CELERITY in connecting hoses, to equipments and plants is what distinguishes this type of fitting from the other ones.

The standard construction material is AISI 316L.



RECOMMENDED GASKET

DIFLEX CAM & GROOVE gasket, resistant to all acids and chemicals, pharmaceuticals and food products with temperatures from -170 °C to +270 °C and pressures up to 50 bar.



GASKET CAM & GROOVE

DN	L	l1	Ø D	Ø d1	Ø d2	Ø A
15 - 1/2"	66	30	24,5	15	13	70
20 - 3/4"	86	31	29	19	19,2	70
25 - 1"	92	34	36,5	24	25,7	80
32 - 1 1/4"	99	40	44,5	31	32,4	90
40 - 1 1/2"	101	51	53	37	38,5	100
50 - 2"	120	62	63	46	51	110
65 - 2 1/2"	132	68	75,5	56	64	130
80 - 3"	155	81	91	73	75	150
100 - 4"	158	92	120	102	101	170

DN	Ø A	Ø B	C
15 - 1/2"	26	17	3,96
20 - 3/4"	35	22	5,53
25 - 1"	40	27	6,35
32 - 1 1/4"	49	34	6,35
40 - 1 1/2"	55	41	6,35
50 - 2"	66	51	6,35
65 - 2 1/2"	79	60	6,35
80 - 3"	94	76	6,35
100 - 4"	123	102	6,35