



AISI 316L PFA LINED AD TYPE - EN 14420-7:2004 CAM & GROOVE DIFLON F12

The fast fitting is used in chemical, pharmaceutical and food industries.

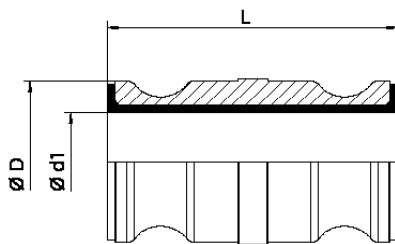
The CELERITY in connecting hoses, to equipments and plants is what distinguishes this type of retainer from the other ones.

The standard construction material is AISI 316L/PFA.

The inner lining ensures resistance against nearly all chemicals, pH 0÷14, design temperature -40 °C ÷ 200 °C.

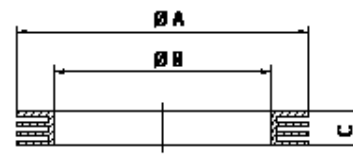


Antistatic version



RECOMMENDED GASKET

DIFLEX CAM & GROOVE gasket, resistant to all acids and chemicals, pharmaceuticals and food products with temperatures from -170 °C to +270 °C and pressures up to 50 bar.



GASKET CAM & GROOVE

DN	L	Ø D	Ø d1
20 - ¾"	75	29	16
25 - 1"	95	36,5	20
32 - 1 ¼"	105	44,5	28
40 - 1 ½"	110	53	32
50 - 2"	130	63	42
65 - 2 ½"	135	75,5	55
80 - 3"	135	91	70
100 - 4"	150	120	94

DN	Ø A	Ø B	C
20 - ¾"	35	22	5,53
25 - 1"	40	27	6,35
32 - 1 ¼"	49	34	6,35
40 - 1 ½"	55	41	6,35
50 - 2"	66	51	6,35
65 - 2 ½"	79	60	6,35
80 - 3"	94	76	6,35
100 - 4"	123	102	6,35