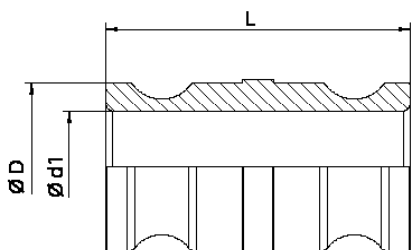


□ AISI 316L AD TYPE - EN 14420-7:2004 CAM & GROOVE DIFLON F11

The fast fitting is used in chemical, pharmaceutical and food industries.

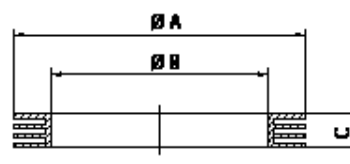
The CELERITY in connecting hoses, to equipments and plants is what distinguishes this type of fitting from the other ones.

The standard construction material is AISI 316L.



RECOMMENDED GASKET

DIFLEX CAM & GROOVE gasket, resistant to all acids and chemicals, pharmaceuticals and food products with temperatures from -170 °C to +270 °C and pressures up to 50 bar.



GASKET CAM & GROOVE

DN	L	Ø D	Ø d1
15 - 1/2"	70	24,5	13
20 - 3/4"	74	29	21
25 - 1"	92	36,5	24
32 - 1 1/4"	104	44,5	32
40 - 1 1/2"	108	53	38
50 - 2"	128	63	48
65 - 2 1/2"	134	75,5	60
80 - 3"	134	91	73
100 - 4"	144	120	99

DN	Ø A	Ø B	C
15 - 1/2"	26	17	3,96
20 - 3/4"	35	22	5,53
25 - 1"	40	27	6,35
32 - 1 1/4"	49	34	6,35
40 - 1 1/2"	55	41	6,35
50 - 2"	66	51	6,35
65 - 2 1/2"	79	60	6,35
80 - 3"	94	76	6,35
100 - 4"	123	102	6,35