



AISI 316L PFA LINED LBS FF EN 14420-7:2004 CAM & GROOVE DIFLON F10

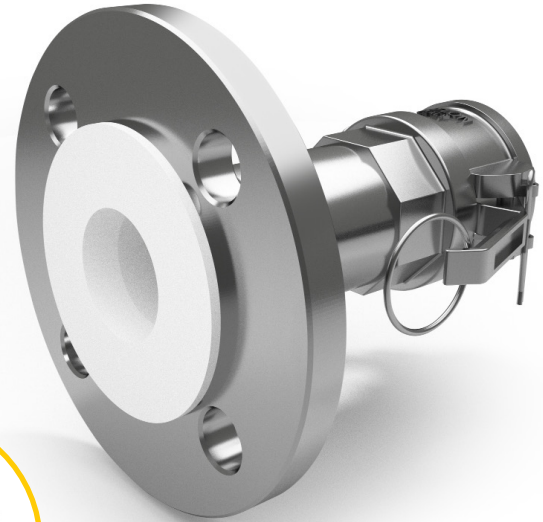
The fast fitting is used in chemical, pharmaceutical and food industries.

The CELERITY in connecting hoses, to equipments and plants is what distinguishes this type of retainer from the other ones.

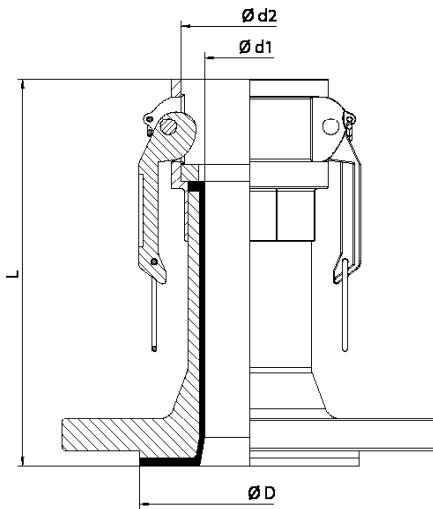
The standard construction material is AISI 316L/PFA.

The inner lining ensures resistance against nearly all chemicals, pH 0÷14, design temperature -40 °C ÷ 200 °C.

The fitting flange is made according to the Standard Specification required by the customer.

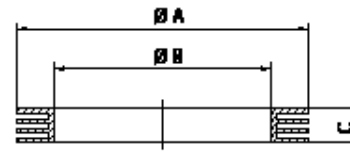


Antistatic version



RECOMMENDED GASKET

DIFLEX CAM & GROOVE gasket, resistant to all acids and chemicals, pharmaceuticals and food products with temperatures from -170 °C to +270 °C and pressures up to 50 bar.



GASKET CAM & GROOVE

DN	L	Ø D DIN	Ø D ANSI	Ø d1	Ø d2
20 - ¾"	92	58	43	17	30
25 - 1"	103	68	51	23	37,5
32 - 1 ¼"	113	78	64	32	45,5
40 - 1 ½"	117	88	73	38	54
50 - 2"	125	102	92	49	64
65 - 2 ½"	133	122	105	68	76,5
80 - 3"	144	138	127	78	92
100 - 4"	150	158	158	102	121

DN	Ø A	Ø B	C
20 - ¾"	35	22	5,53
25 - 1"	40	27	6,35
32 - 1 ¼"	49	34	6,35
40 - 1 ½"	55	41	6,35
50 - 2"	66	51	6,35
65 - 2 ½"	79	60	6,35
80 - 3"	94	76	6,35
100 - 4"	123	102	6,35