

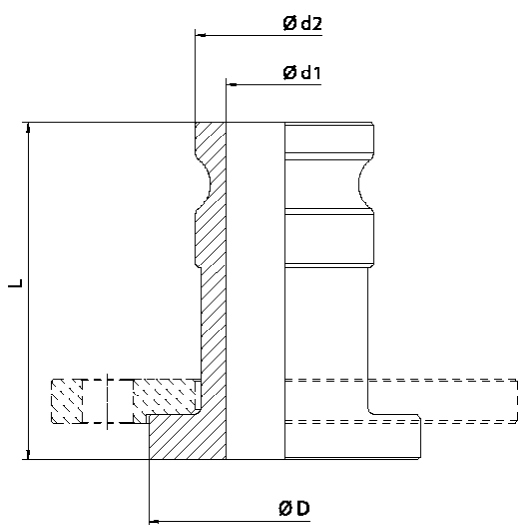
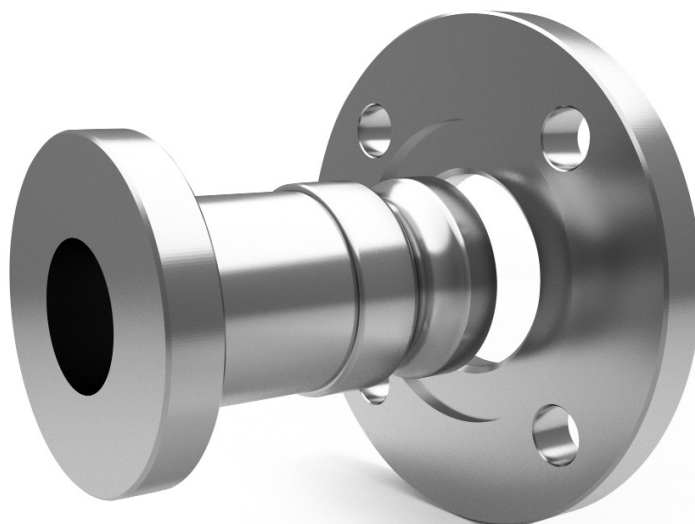
AISI 316L LAS FL EN 14420-7:2004 CAM & GROOVE RETAINER DIFLON F7

The fast fitting is used in chemical, pharmaceutical and food industries.

The CELERITY in connecting hoses, to equipments and plants is what distinguishes this type of fitting from the other ones.

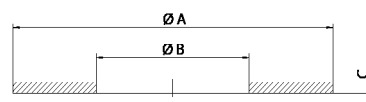
The standard construction material is AISI 316L.

The flange can be provided in the Standard Specification and material according to customer requirements.



RECOMMENDED GASKET

DIFLEX flat gasket, resistant to all acids and chemicals, pharmaceuticals and food products with temperatures from -170 °C to +270 °C and pressures up to 50 bar.



FLAT GASKET

DN	L	Ø D DIN/ANSI	Ø d1	Ø d2
15 - 1/2"	80	47	13	24,5
20 - 3/4"	90	47	21	29
25 - 1"	100	58	24	36,5
32 - 1 1/4"	105	68	32	44,5
40 - 1 1/2"	110	78	38	53
50 - 2"	120	92	48	63
65 - 2 1/2"	130	105	60	75,5
80 - 3"	140	127	73	91
100 - 4"	150	158	99	120

DN	Ø A DIN	Ø A ANSI	Ø B	C
15 - 1/2"	45	35	15	3,96
20 - 3/4"	58	43	20	5,53
25 - 1"	68	51	25	6,35
32 - 1 1/4"	78	64	32	6,35
40 - 1 1/2"	88	73	40	6,35
50 - 2"	102	92	50	6,35
65 - 2 1/2"	122	105	65	6,35
80 - 3"	138	127	80	6,35
100 - 4"	158	158	100	6,35