

PTFE - PFA EQUAL TEE
DESIGN ASME B16.5 CLASS 150

Standard Supply

Design:

ASME/ANSI B16.5 Class 150

Flange: 3 fixed

Range:

DN 1/2" - DN 20"

Metallic parts:

body: ASTM A 234 WPB

ASTM B16.9

flange: ASTM A 105

Cast Steel: ASTM A216

Grade WCB

Interior lining:

← PTFE

← PFA

Variants

Design:

ASME/ANSI B16.5 Class 300

Flange: 1 fixed + 2 free

Metallic parts:

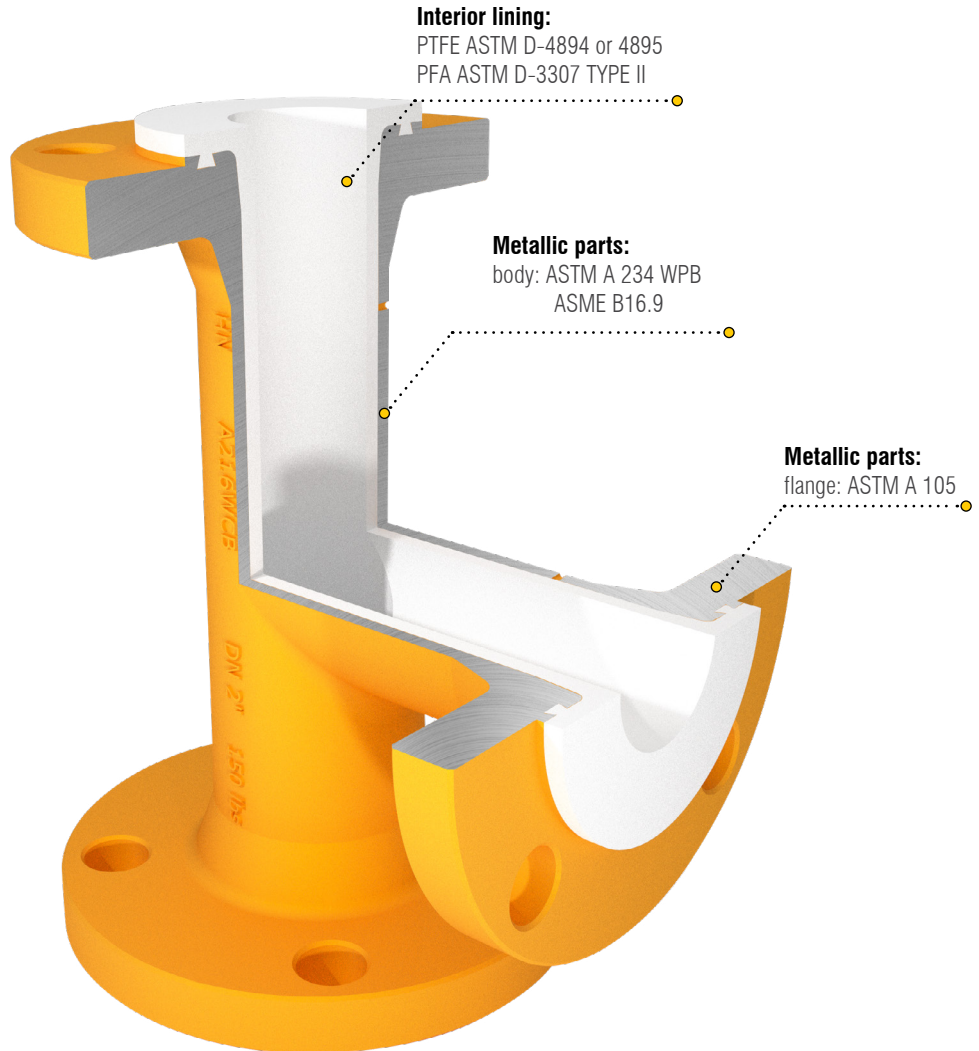
Stainless Steel 304L/316L

Low temp. steel P275NL

Interior lining:

← Antistatic PTFE

← Antistatic PFA



Equal Tee in Antistatic version



Standard finishing:
gray epoxy-vinyl zinc paint

Available on request



Approvals and Certifications



Quality and Special tests



Engineering Services



Special Supply

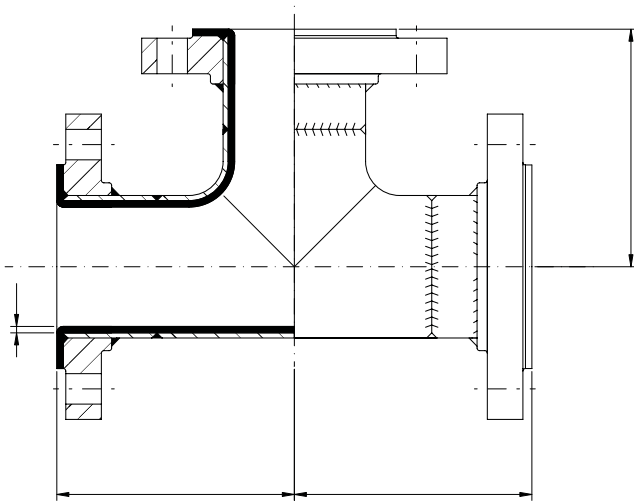


Stainless steel 304L/316L components



External Finiture







**PTFE - PFA EQUAL TEE
DESIGN ASME B16.5 CLASS 150**



Dimension table

DN	L mm	s ± 10% mm	Weight kg
1/2"	65	3	2,5
3/4"	75	3	3,2
1"	89	3,5	3,6
1 1/4"	95	3,5	4,7
1 1/2"	102	4,0	6,1
2"	114	4	9,7
2 1/2"	127	4,5	13,5
3"	140	4,5	21
4"	165	5	36
5"	190	6	57
6"	203	6,0	82
8"	229	7	121
10"	279	7,5	165
12"	305	8	228
14"	356	8	312
16"	381	8	375
18"	419	8	400
20"	457	8	420
24"	500	8	580

Technical specifications of Difline products

-  Pipes and Flanges dimensions according to ASME B16.5 Class 150
-  Fittings dimensions according to ASME B16.5 Class 150
-  Operative Conditions
-  Bolt Torque
-  Finiture, Marking, Packing
-  Table of Chemical Resistance of Materials*