



DIN

index

previous view

D2-35

data sheet

DIFLINE

D2

PTFE - PFA EQUAL TEE DESIGN DIN 2448/2874 - CERTIFIED - 2014/68/EU (PED)

Standard Supply

Design:

DIN 2848/2874

Flange: 1 fixed + 2 free

Range:

DN 15 - DN 600, PN 10

Version A:

With welded components

body: GP240GH ASTM A234 WPB

flange: P245GH EN 1092-1

stub-end: P235GH EN 10273

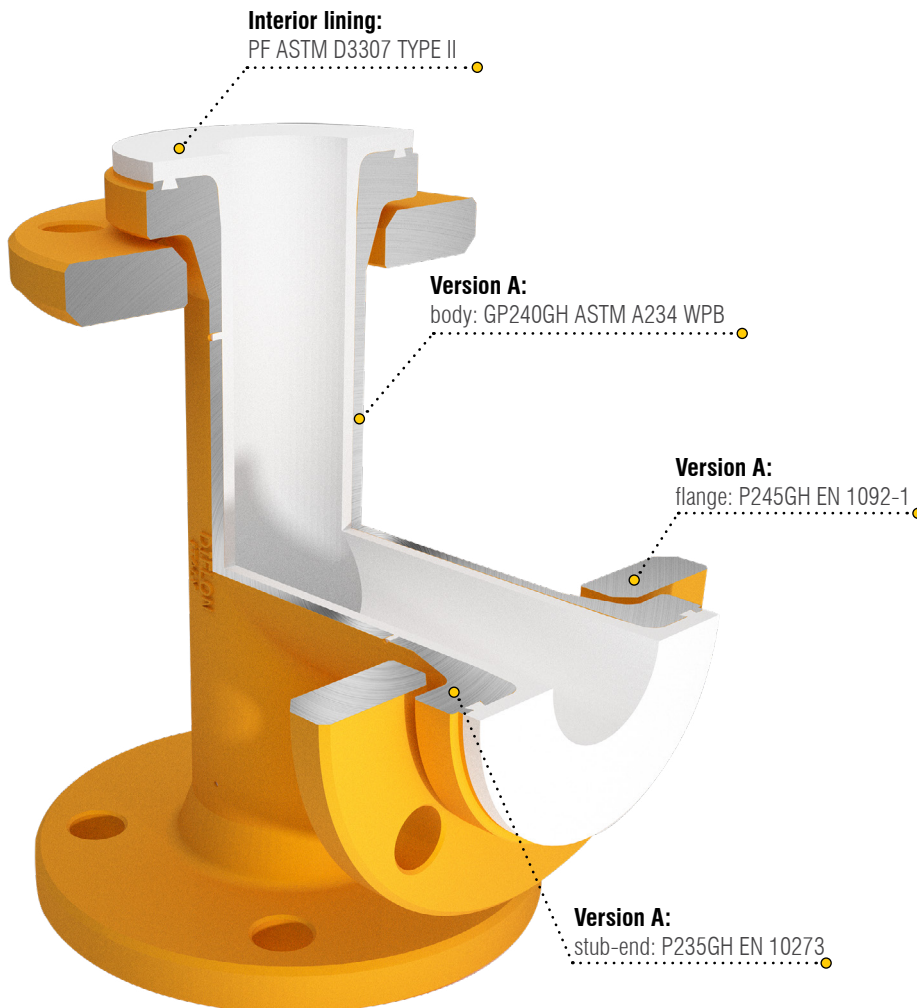
Version F:

fusion: GP240GH

Rivestimento interno:

← PTFE

← PFA



Variants

Design:

for big diameters more than one piece will be provided

Flange: 3 fixed

Metallic parts:

Stainless Steel 304L/316L

Low temp. steel P275NL

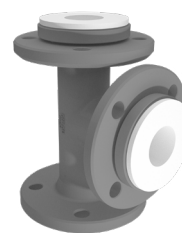
Interior lining:

← Antistatic PTFE

← Antistatic PFA



Equal Tee in Antistatic version



Standard finishing:
gray epoxy-vinyl zinc paint

Available on request



Approvals and Certifications



Quality and Special tests



Engineering Services



Special Supply

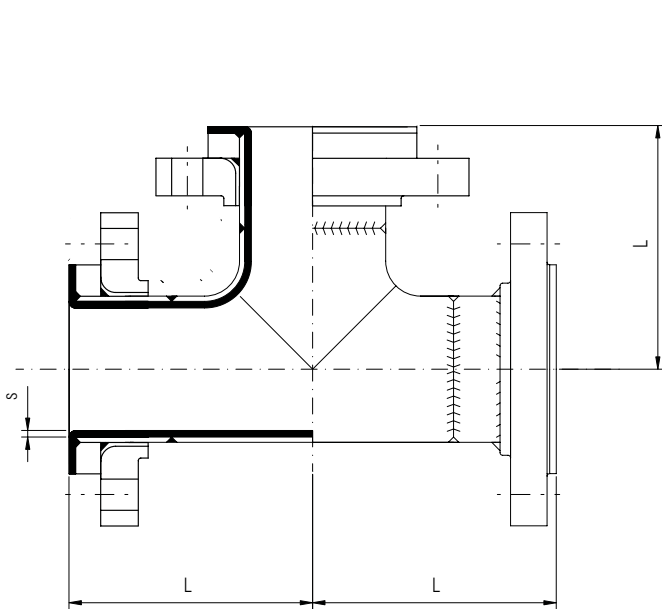


Stainless steel 304L/316L components



External Finiture







**PTFE - PFA EQUAL TEE
DESIGN DIN 2448/2874 - CERTIFIED - 2014/68/EU (PED)**



Dimension table

DN	L mm	s ± 10% mm	Weight kg
15	80	3,0	2,5
20	95	3,5	3,2
25	110	3,5	5,5
32	130	4,5	8,0
40	150	4,5	9,5
50	120	5,0	11,5
65	140	5,0	14,5
80	165	5,0	19,5
100	205	5,0	24
125	245	5,5	34
150	285	6	45
200	365	10	72
250	450	6,5	165
300	525	13	160
350	600	6,5	312
400	680	6,5	375
450	680	6,5	400
500	500	6,5	420
600	500	4,5	580

Technical specifications of Difline products

-  **Pipes and Flanges dimensions according to DIN**
-  **Fittings dimensions according to DIN 2848**
-  **Operative Conditions**
-  **Bolt Torque**
-  **Finiture, Marking, Packing**
-  **Table of Chemical Resistance of Materials***